

APEX DBM Fiber

APEX DBM Fiber Technology consists of 100% Demineralized Cortical Bone creating a malleable fibrous structure when hydrated with any bioactive agent. The fibrous matrix provides an excellent osteoconductive scaffold with increased osteoinductive potential based on its larger surface area.

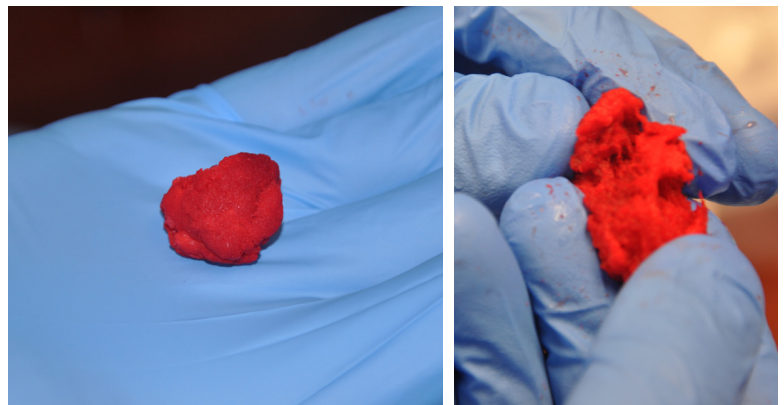
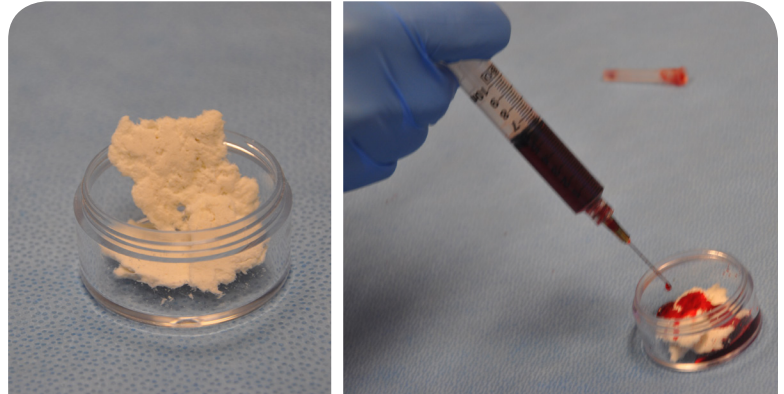
APEX DBM Fiber Technology offers a combination of a porous surface structure and a bulk fibrous structure. This combination simultaneously provides a porous host for endogenous cells, and serves an attractive protein binding site for cell signaling to promote chemotaxis. APEX DBM Fiber can serve as a superior vehicle for tissue integration when combined with the inherent biochemical properties of the scaffold.

Indications for Use

The graft is indicated for use in bony voids or gaps that are not intrinsic to the stability of the bony structure. It should be gently packed into bony voids or gaps of the skeletal system (i.e., the extremities, spine, and pelvis). These defects may be surgically created osseous defects or osseous defects created from traumatic injury to the bone. The graft provides a bone void filler that resorbs and is replaced by the growth of new bone during the healing process. It can be mixed with autogeneous bone marrow prior to use at the physician's discretion.

1125 W. Pinnacle Peak Road
Building #2
Phoenix, AZ 85021

WWW.PINNACLETRANSPLANT.COM



- **100% Cortical, no carrier**
- **Wicks blood, BMA, PRP in minutes**
- **Malleable and formable when hydrated**
- **Osteoconductive**
- **Osteoinductive Potential**
- **Sterile: SAL 10⁻⁶**

Product Codes and Sizes

APX-FBR-02 Apex 2.5cc Fiber

APX-FBR-05 Apex 5cc Fiber

APX-FBR-10 Apex 10cc Fiber